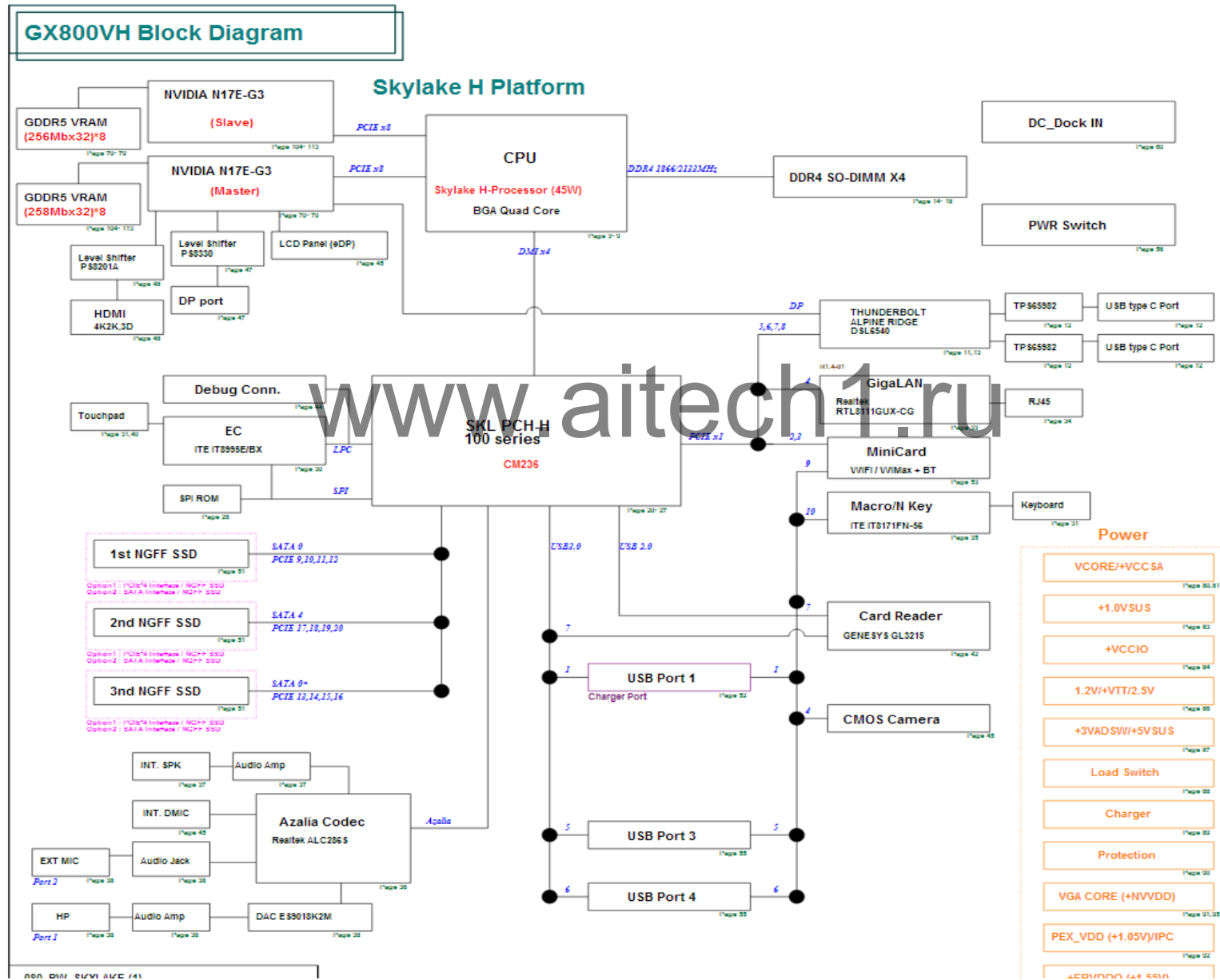
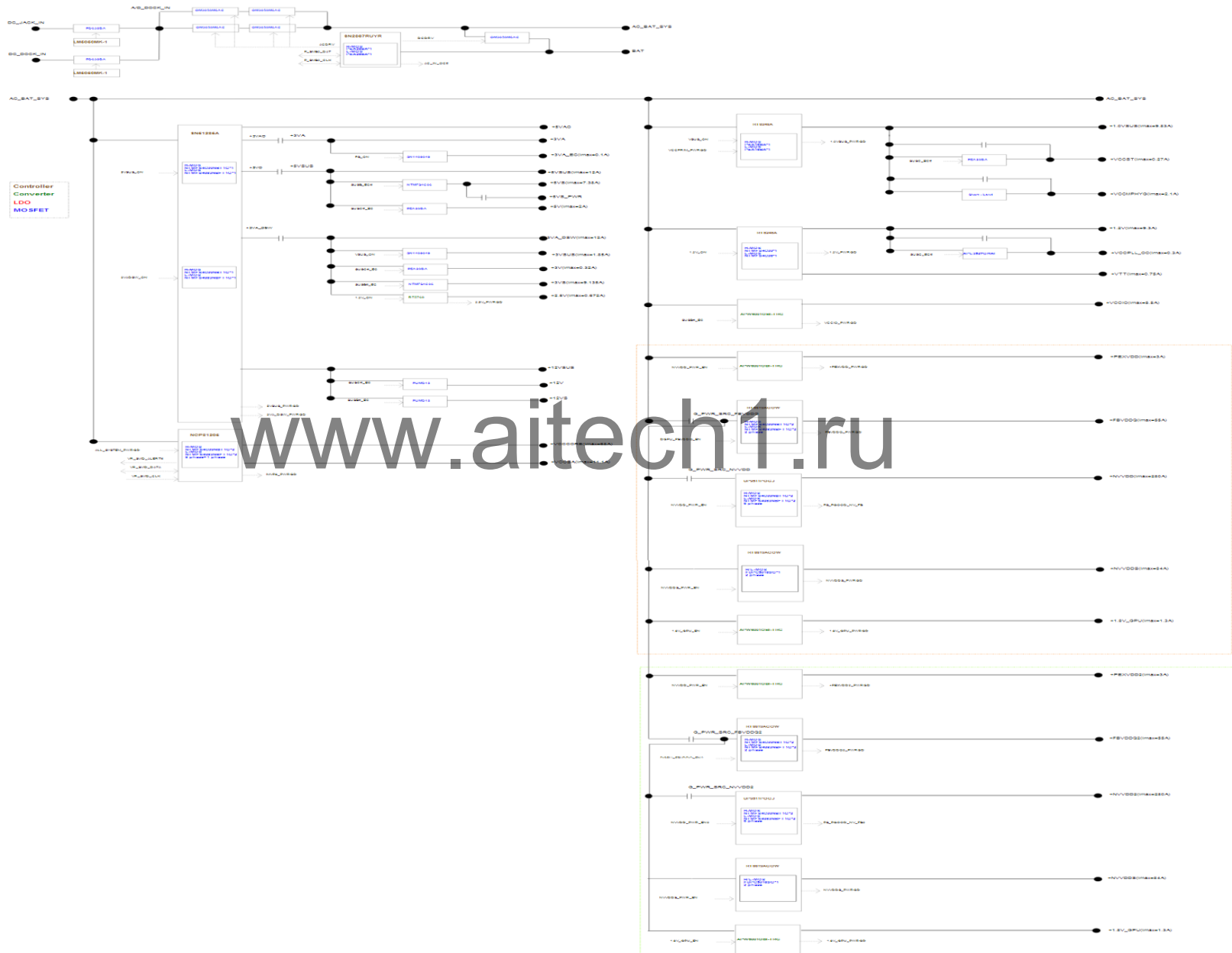


BLOCK DIAGRAM



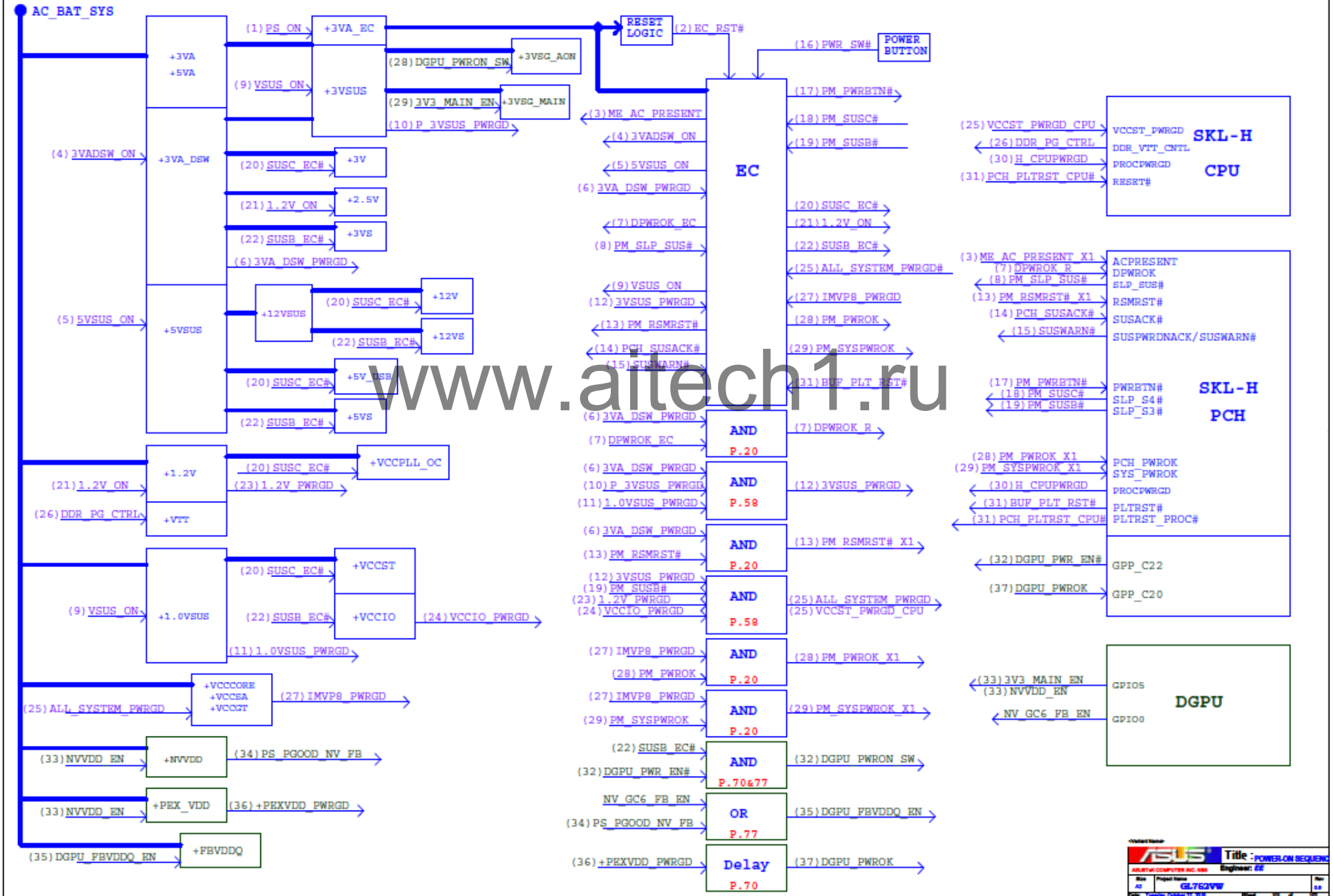
POWER FLOW



POWER ON SEQUENCE

AC-IN Mode

GL752VW Power On Sequence Diagram Rev.1.0



AC_IN POWER ON SEQUENCE

AC-IN Mode

Power Signal

(1) +3VA/+5VA

(2) PS_ON

(3) +3VA_EC

(4) +EC_RST#

(5) +3VA_DSW

(6) 3VA_DSW_PWRGD

(7) DPWRK_EC

(8) PM_SLP_SUS#

(9) +3VSUS/+1.0VSUS

(10) +12VSUS/+5VSUS

(11) 3VSUS_PWRGD

(12) PM_RSMRST#

(13) SUSWRN#

(14) ME_AC_PRESENT

(15) PCH_SUSACK#

(16) PWR_SW#

(17) PM_PWRBTN#

(18) PM_SUSC#

(19) PM_SUSB#

(20) +12V/+5V/+3V/+VCCST

(21) +12VS/+5VS/+5VS_PWR/+3VS/+VCCPLL_OC

+1.0V_VCCST, VCCPLL

+VCCSTG

+VCCPLL_OC

(22) +1.2V

(23) +2.5V

+VCCIO

DDR_VTT_CTRL

+VTT

(24) ALL_SYSTEM_PWRGD

(25) P_IMVP8_EN_10

(26) P_IMVP8_DRVON

+VCCCORE/+VCCGT/+VCCSA

(27) IMVP8_PWRGD

(28) VCCST_PWRGD_CPU

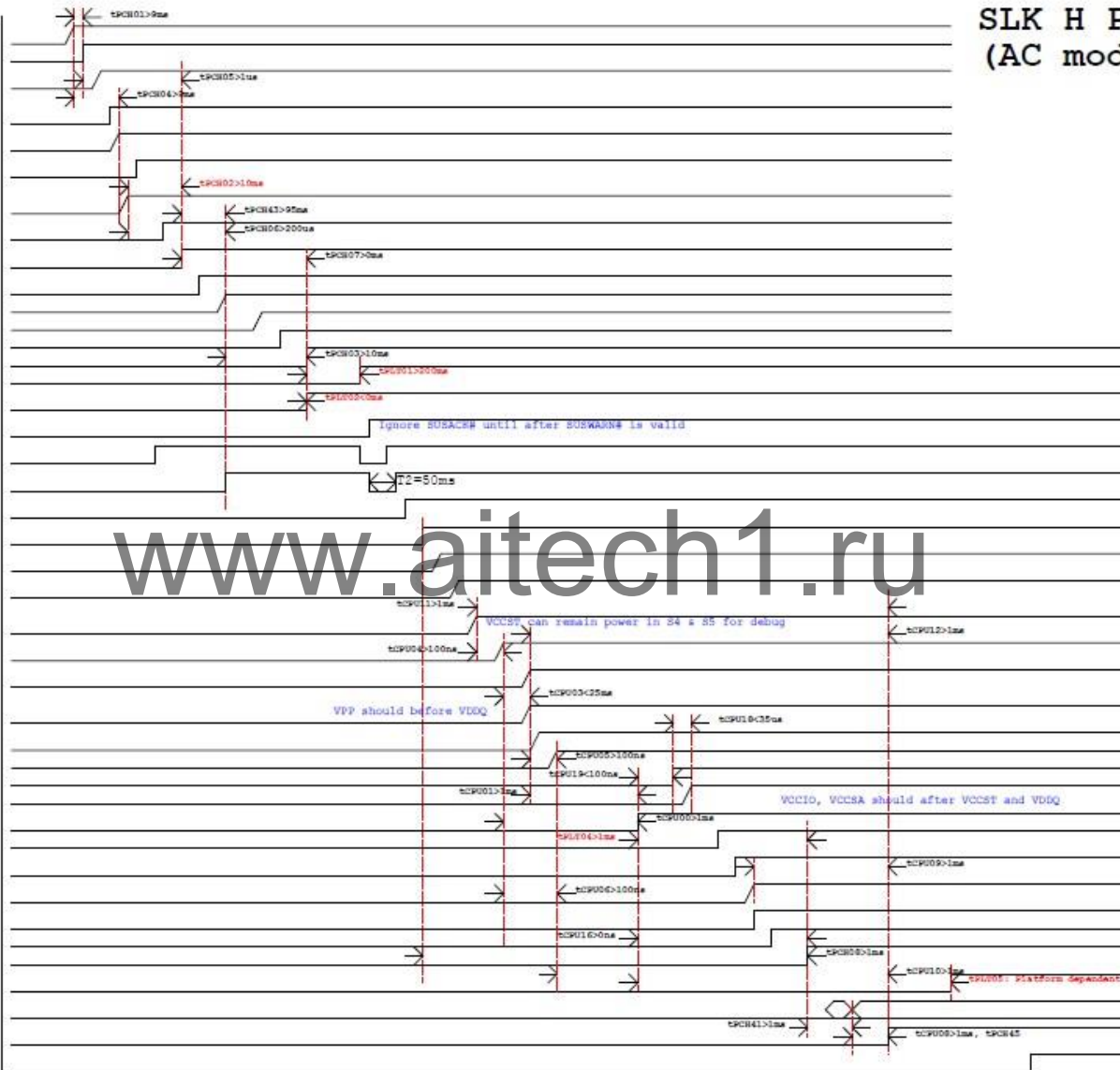
(29) PM_PWRK

(30) PM_SYSPWRK

CLK_PCH_BCLK

(31) H_CPUFWRGD

(32) PCH_PLTRST_CPU#



SLK H Power Sequence (AC mode)

www.aitech1.ru

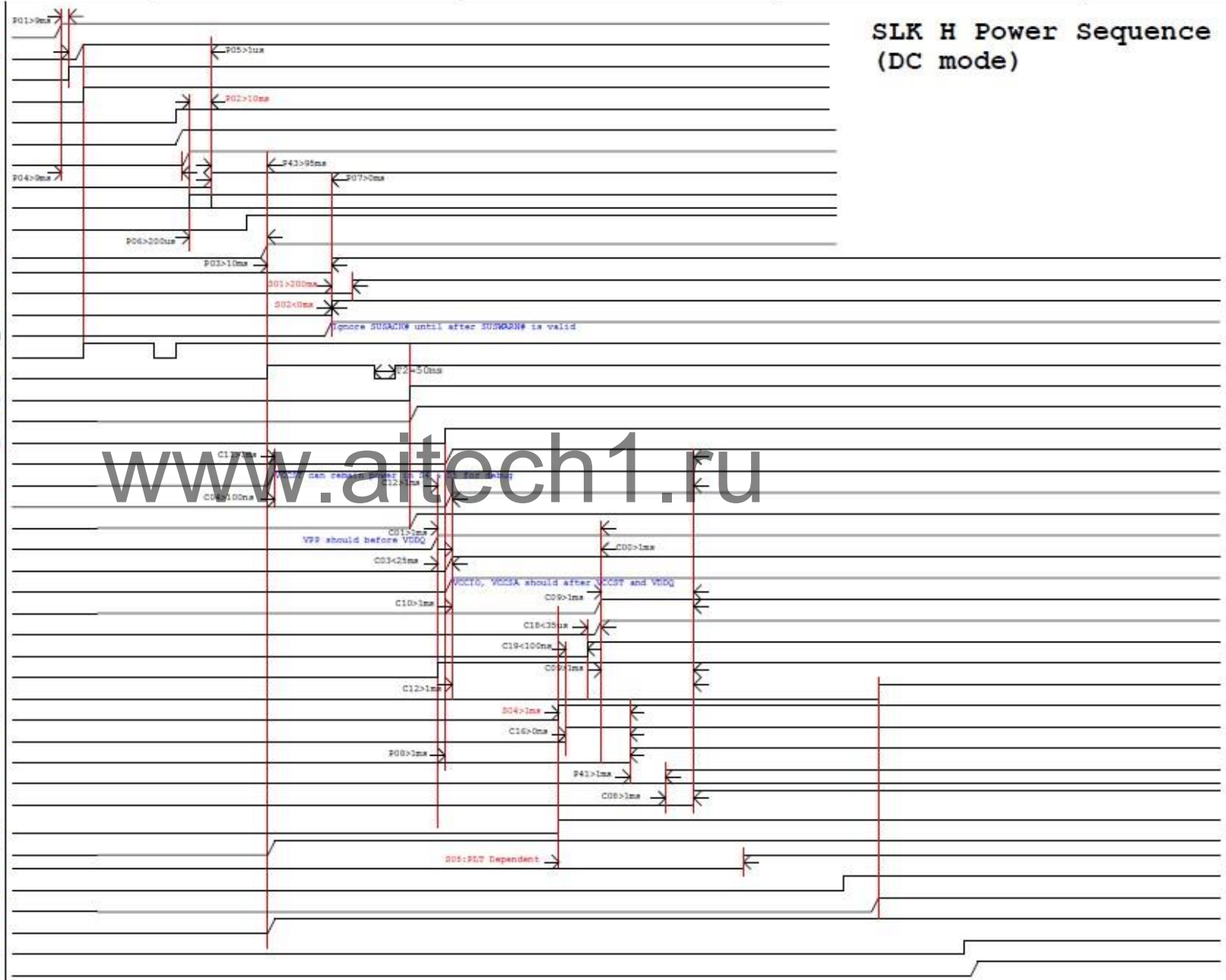
DC_IN POWER ON SEQUENCE

DC-IN Mode

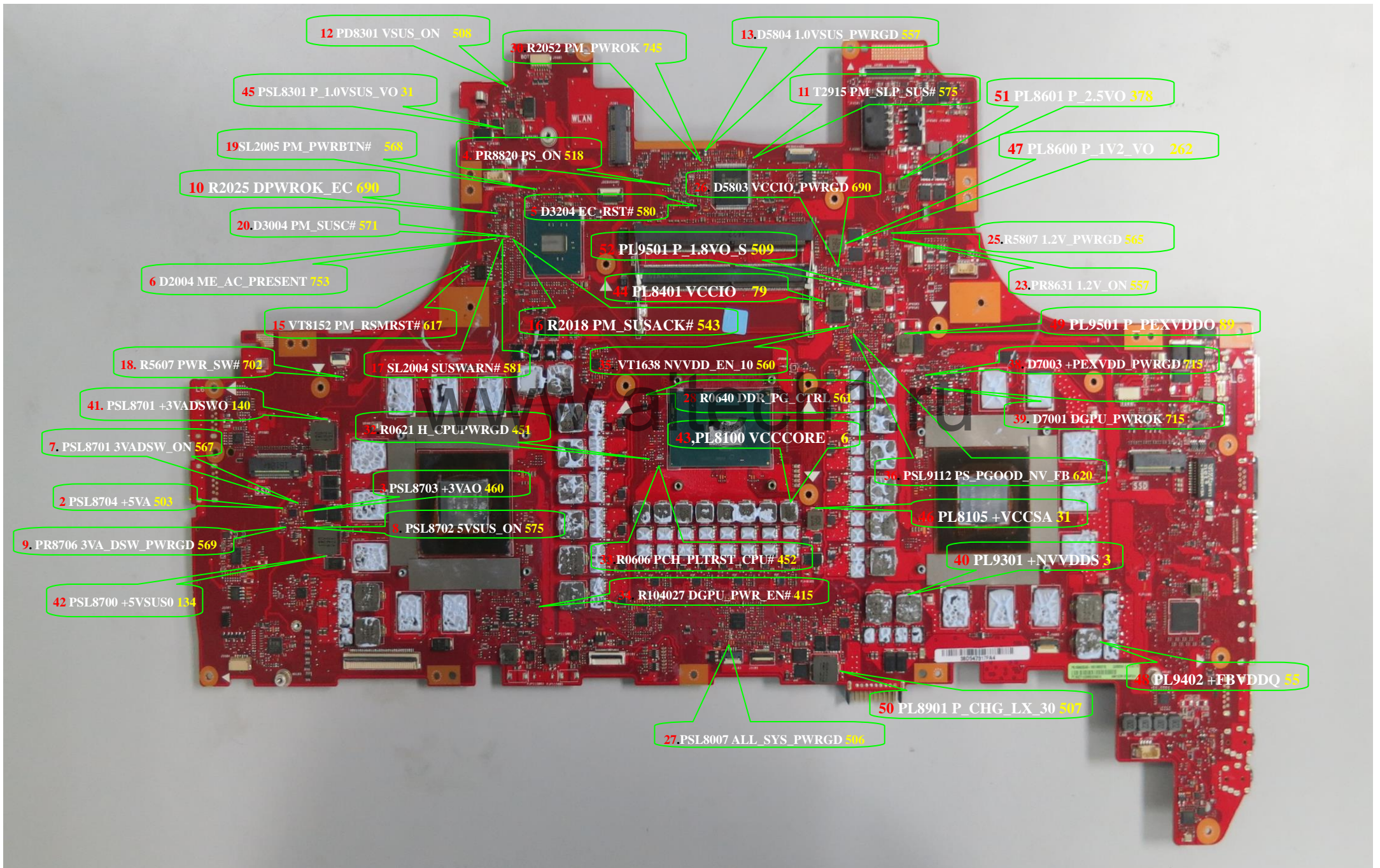
```

C:CPU                                     (+RTCBAT)+3VA_RTC
P:PCH                                     (AC_BAT_SYS)+3VA/+3VA
S:PLT                                     (+3VA_RTC) RTCRST# (PCH)
Power                                     (Power) AC_IN_OC# (EC)
Signal                                    (EC) PS_ON (+3VA_EC)
                                           (PS_ON)+3VA_EC (EC)
                                           (3VADSW_ON)+3VA_DSW (3VA_DSW_FWRGD)
                                           (EC) DPWROK_EC (PCH)
                                           (+3VA_DSW) PM_BATLOW# (PCH)
                                           (PCH) EM_SLP_SUS# (EC)
(VSUS_ON) +1.0VSUS_VCCPRIM (1.0VSUS_FWRGD)
                                           (EC) PM_RSTB#_PCH (PCH)
                                           (PCH) SUSWARN# (EC)
                                           (EC) ME_AC_PRESENT_PCH (PCH)
                                           (EC) PCH_SUSACK# (PCH)
                                           (PWR_Switch) PWR_SW# (EC)
                                           (EC) PM_FWRBTN# (PCH)
                                           (EC) SUSC_EC# (Power)
                                           (SUSC_EC#)+12V/+5V/+3V
                                           (EC) SUSB_EC# (Power)
                                           (SUSB_EC#)+12VS/+5VS/+3VS
(VSUS_ON) +1.0V_VCCST,VCCPLL (VCCST_FWRGD)
                                           (+VCCIO)+VCCSTG
                                           (1.2V_ON)+2.5V (2.5V_FWRGD)
                                           (1.2V_ON)+VDDQ_CPU (1.2V_FWRGD)
                                           (+12VS)+VCCPLL_OC
                                           (SUSB_EC#)+VCCIO (VCCIO_FWRGD)
(ALL_SYSTEM_FWRGD)+VCCSA (IMVP8_FWRGD)
                                           {DDR_VTT_CTRL}+0.6V
(CPU) DDR_VTT_CTRL (Power)
                                           (Power) 1.2V_FWRGD (AND)
                                           (Power) IMVP8_FWRGD
(AND) ALL_SYSTEM_FWRGD (CPU/PCH/EC/Power)
(ALL_SYSTEM_FWRGD) VCCST_FWRGD_CPU (CPU)
                                           (EC) FM_FWROK_PCH (PCH)
                                           (PCH) CLK_PCH_BCLK (CPU)
                                           (PCH) H_CPUFWRGD (CPU)
(ALL_SYSTEM_FWRGD) F_IMVP8_EN_10 (Power)
                                           (CPU) F_SVID_DATA_X2 (Power)
                                           (EC) FM_SYSPWROK_PCH (PCH)
                                           (PCH) PLT_RST# (CPU/EC/Device)
(P_IMVP8_DRVON)+VCCCORE (IMVP8_FWRGD)
                                           (CPU) H_THERMTRIP# (PCH)
                                           (PCH) DDR4_DRAMRST# (Memory)
                                           +VCCG#

```



Signal Measure Point-Bottom



Signal Measure Point-Top

